



Disney During Christmas

**The
December
2024
Issue**

**What is in
this issue:**



**Disney
During
Christmas**

**Tokyo
Disneyland
vs Tokyo
Disney Sea**

**Disney
Darks
Around the
World**



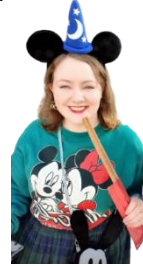
The Most Wonderful Time of Year

Sheila's Favorite Things



The Christmas **season** is my very favorite time of year and Disney is my very favorite place. So, when I get to visit Tokyo Disneyland or Tokyo Disney Sea during their special Christmas events, I am so happy! Just seeing the beautiful **decorations** really raises my spirits. They are so **jolly**, joyful, and **festive**!

The giant Christmas trees in World Bazaar or in American Waterfront **glow** with colorful lights, shiny **tinsel**, and big **baubles**. Maybe my favorite thing is to see all the gorgeous window displays of the different characters enjoying the winter weather. It is like window shopping past so many warm department stores.



Tokyo Disney Christmas Nov. 15 – Dec. 25, 2024

This Christmas will be the last year of the Disney Christmas Stories **parade** in Tokyo Disneyland. I will be sad because I enjoyed watching this parade in the past, but I bet the next parade will be great too. At night, the Electrical Parade *Dreamlights* will be a special Christmas **version**. The Haunted Mansion will be a "Holiday Nightmare" all autumn and winter. What a fun **mix**!

At Disney Sea, you can see your favorite characters and even Santa during the Disney Christmas Greeting. You can also see a "Dazzling Christmas in New York" at the American Waterfront. I am sure it would be **nostalgic** for Miss Hrithika because she is from New York City.

And at both parks you can get Christmas food & goods!

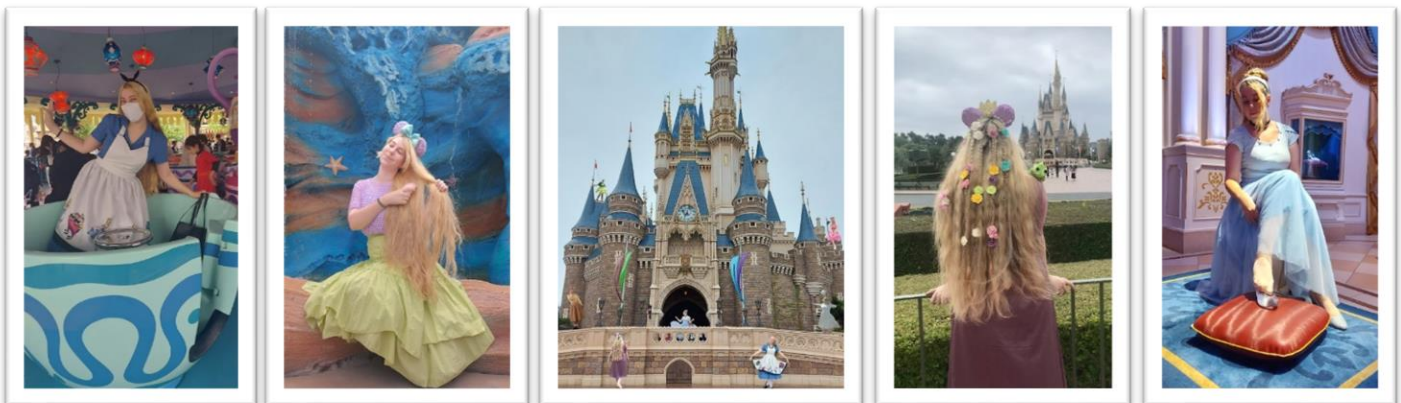
**XOXO,
Sheila**



Tokyo Disney Showdown! Land vs Sea

ATMOSPHERE, CENTREPIECE, BEAUTY, RIDES, UNIQUENESS

Tokyo Disneyland is the perfect **stereotypical** Disney park. When you enter you can see flowers in the shape of Mickey Mouse or one of his friends, and the castle in the **distance**. One of the first things I do when I get to Land is take photos in front of the castle; it's **iconic**. The whole park is colourful and exciting. Fantasyland is especially **magical**; it feels like you're in a Disney Princess movie. Snow White's **grotto** is a hidden gem. 75% of attractions at Land have a Disney movie theme. Some of the best rides are The Enchanted Tale of the Beauty and the Beast, The Happy Ride with Baymax, and Pooh's Hunny Hunt. These are all **unique** to Tokyo. Though, lots of other rides are the same as the **original** American Disneyland (Pirates of the Caribbean, Peter Pan, Dumbo, Haunted Mansion, etc). The 3 mountain rides (Splash, Space, & Big Thunder) are **thrilling**, but most rides are very **tame**.



Tokyo Disneysea has a cool, **mature** feeling. When you enter you see a beautiful moving **globe**, and the European style lake. The view from the **gondolas** here is **especially** beautiful. The huge **volcano** is a fun **centrepiece**, and it's very exciting when smoke and fire come out of the top. It's not great for pictures though. Some areas are bright and colourful, but most of the park is **natural** looking. While some areas are Disney themed, most are based on real places. There's **canals** from **Venice**, Broadway street from New York, the Lost River Delta area from **Mayan** culture, and more. Though I think the Disney themed Mermaid Lagoon is the most beautiful place in either park! 60% of attractions have a Disney movie theme. Top rides include the new Rapunzel & Frozen rides, Soaring, & Journey to the Centre of the Earth. There are also many thrills! (Journey, Tower of Terror, Indiana Jones, & Raging spirits.)

Atmosphere: Both parks are great in their own way, so it's a tie.

Centrepiece: Nothing beats the iconic castle, Land wins.

Beauty: Sea wins for being designed beauty first, Disney second.

Rides: With a better mix of family friendly and thrill rides, Sea wins.

Uniqueness: Land has some unique rides, but all of Sea is unique- it wins.

SHOWS

Land has Mickey's Magical Music World, Club Beat, Jamboree Mickey, and two restaurant shows. Sea has Big Band Beat, Jamboree Mickey and one restaurant show. Big Band Beat is a great **jazz** show for Japanese & **international** audiences. Music World has big **set pieces** like a pirate ship, and dancers doing difficult **gymnastics**. It's my favourite!

Both have great shows, Land wins for having more.



FOOD

There are fun Disney themed restaurants at both parks, with options for sit down dining, fast food style, and food trucks. Some standouts are the Blue Bayou restaurant inside the Pirates ride at Land, the **historic** Italian **decoration** of Magellans at Sea, and the Little Green Men at both. With more fast food style options at Land, food is a bit more **accessible**. Land has many **exclusive** popcorn flavours (Milk Tea, Honey, Corn Potage, Strawberry Napoleon, Salted Caramel, & Cheddar Cheese), while Sea only has two (garlic shrimp & roast beef).

Land wins for its popcorn flavours & accessible dining.



PARADES

There are many different **seasonal** parades at both parks, but let's just compare the normal ones! The day parade at Disneyland is super colourful, with lots of great dancers. My favourite car is Rapunzel's, where she swings on her own hair! Guests feel **included** when dancers or characters like Belle and Adam walk up and say hello to them. The day greeting at Sea has fun music, and one boat with Mickey and friends. While it's great to see them, it's not very **engaging**. The night parade at Land is beautiful with **millions** of lights, but it just cannot beat the **spectacle** of Believe! Sea of Dreams. The show uses music, **fireworks**, volcano eruptions, **projections** onto the hotel, characters on boats, and floating stars to tell an **uplifting** story about not giving up.

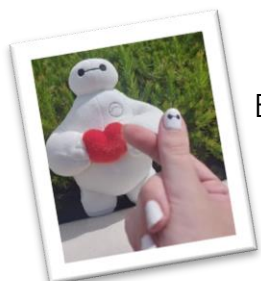
Land wins for Day, Sea wins for Night, so overall, it's a tie!



DANCING

Both parks have Jamboree Mickey, but they are very different. At Land it's in a small **theatre** in front of a **narrow** path. At Sea, it's in a large open area in front of the SS Columbia. You can watch from above on the boat, in the seated area, or from behind. It's so fun when hundreds of people dance together. But! Land has the Happy Ride with Baymax. There are 6 songs with 6 unique dances. The workers **operate** the ride with one arm, and dance with the other. People dance in line, but some people dance without even waiting to go on the ride. Over multiple visits, I've spent hours just dancing at Baymax, it's so much fun! Especially at night when there are lots of dancers.

Land has Baymax, Sea has the best Jamboree, it's a tie!



It's a Tie!

Disney Parks Around the World



“I think most of all what I want Disneyland to be is a happy place...where parents and children can have fun, together.”

—Walt Disney, as inscribed on the plaque directly below the "Partners" statue.

We asked our friends about Disney parks around the world!

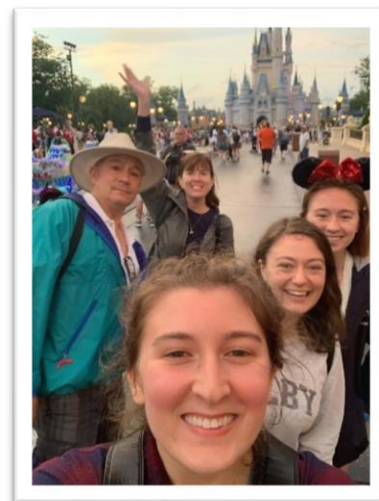


Walt Disney World, Florida & Disneyland, California, U.S.A.

“Disney World has many well-planned parks inside it. It is the biggest Disney in the world! It's in Florida so you should always be prepared for rain! Even if it's just a quick shower.

Disneyland is the first park ever made so it has a lot more history and nostalgia. It's a lot smaller than Disney World and doesn't have as much room to grow because of its location in Anaheim, California which is already very crowded. It's very dry and can get pretty cold compared to Florida.

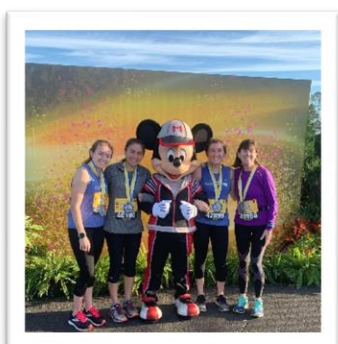
Some people say Disneyland has more magic than Disney World because Walt Disney oversaw the design and construction - it's the only park he built personally! I think I might agree with that. But Disney World is massive and continues to grow so there's always something new opening up which makes visiting the park a new experience every time I go.”



Sofia & family at Walt Disney World's Castle



California Disneyland's Castle



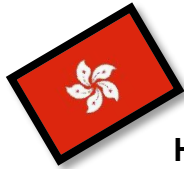
Sofia & family at Walt Disney World half marathon



**XOXO,
Sofia**



**XOXO,
June**



Hong Kong Disneyland & Shanghai Disneyland



June at Shanghai Disneyland's Castle

"Hong Kong Disneyland's new castle is a special one with all the Disney Princesses, the attention to detail is perfect for Disney fans. They also have one of a kind themed lands like Mystic Point, Grizzly Gulch, and the World of Frozen (the Paris one is opening in 2026), which are only available at Hong Kong Disneyland. The Festival of the Lion King show is my all time favourite theatre show of all Disney parks.

Shanghai Disneyland is huge, and as you can imagine there is a lot of walking to get from one attraction to another. You can find unique Chinese cultural influence at Shanghai Disneyland- for example, Tai Chi with the Disney characters and a traditional Chinese shadow puppetry of the Disney characters. In my opinion, the Pirates of the Caribbean ride there is by far the best version across all Disney parks. It is so amazing I rode it twice in a row!"



Christmas at Hong Kong Disneyland's Castle



Disneyland Paris

"Disneyland Paris, which opened in 1992, was originally called Euro Disney. Americans thought this was glamorous, but the name was considered too boring for most Europeans, so it was soon changed. Disneyland Paris was the second Disney park outside of the U.S.A. after Tokyo Disney Resort. The park is very similar to Disneyland in California and Tokyo, with familiar attractions like Space Mountain, Phantom Manor (Paris' version of the Haunted Mansion), and It's a Small World. However, the castle at the centre of the park is Sleeping Beauty's Castle, so you can see the dragon from Sleeping Beauty lurking underneath! You can walk around under the castle!

The second park in Paris is called Walt Disney Studios Park. This park is designed to look like a giant film studio. I think it's actually quite similar to Universal Studios. This is where you can find the Tower of Terror. Walt Disney Studios Park also has fun areas with Pixar and Marvel themes. A new area of the park called World of Frozen will open in the future, and the park will get a new name: Disney Adventure World. It will be exciting to see what the new park is like soon!"



**XOXO,
Rachel**



Rachel & friends at Disneyland Paris' Castle